

Brightlands Chemelot Campus

Scale up innovations in the chemical and biomedical industries





Safety instructions

In the event of a **siren alarm**:

Go to the reasonably airtight room/ toxic shelter



In the event of an **evacuation** of the building:

Go to the dedicated assembly point




In the case of an **emergency**:



Call

+31 (0)46 47 66666

SHE&S / Brightlands Safety, Health,
Environment & Security

 **Chemelot**
one in safety

Brightlands

Brightlands

One community

Four areas of expertise



497 companies



16.020 jobs



13.717 students

Data 1-1-2024



Brightlands

Brightlands Chemelot Campus
Smart materials and sustainable
production of chemicals

 **120**
 **3000**
 **1000**



Brightlands Campus Greenport Venlo
Food and healthy nutrition

 **78**
 **752**
 **1000**



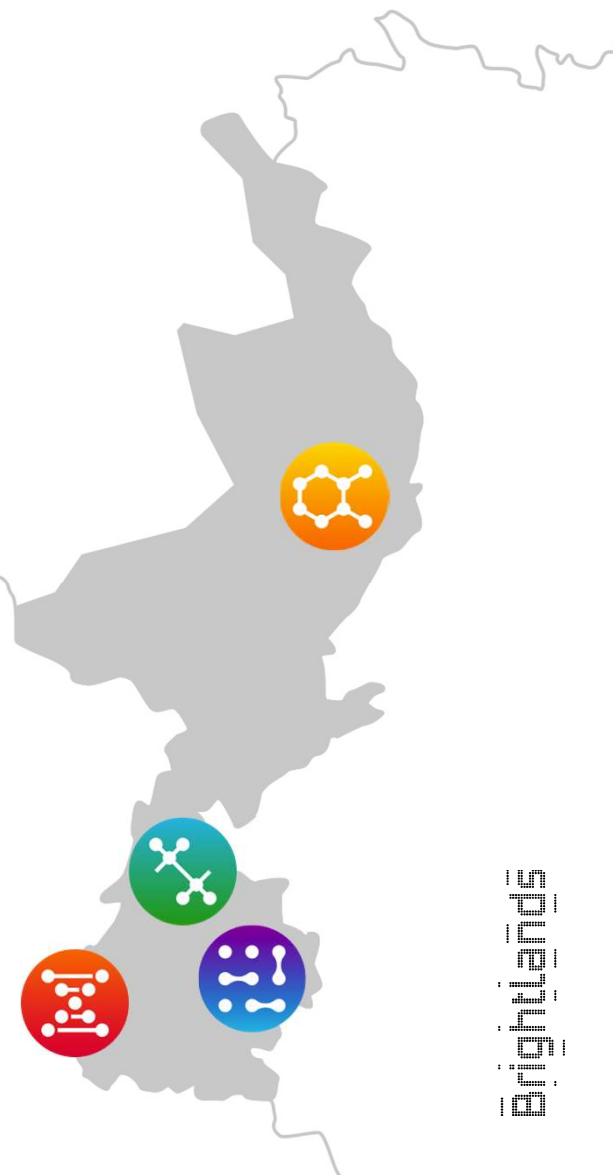
Brightlands Maastricht Health Campus
Regenerative and precision medicine,
innovative diagnostics

 **111**
 **11413**
 **11267**



Brightlands Smart Services Campus
Data science and smart services

 **188**
 **855**
 **450**



Brightlands



Location

Located at the Chemelot

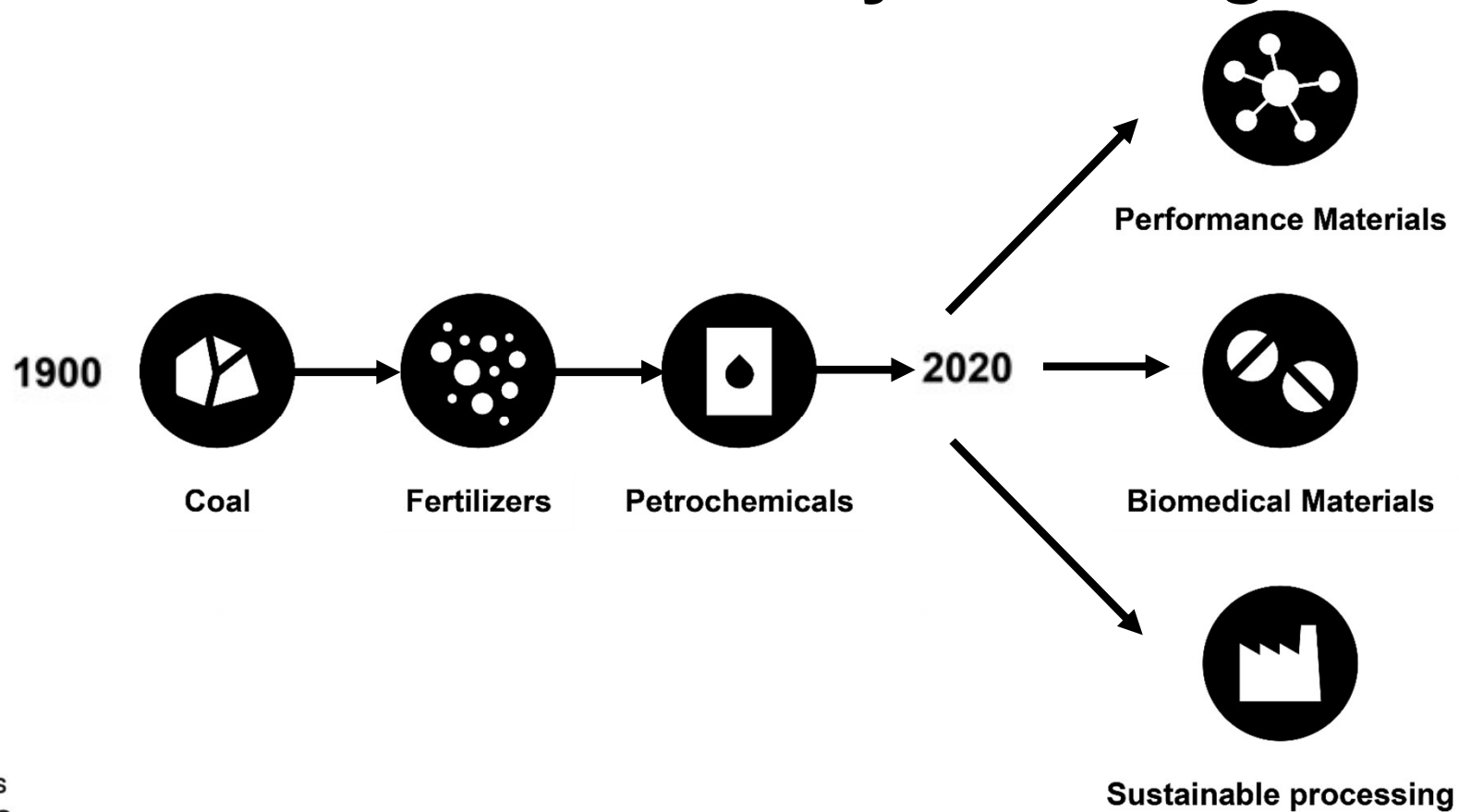
- Second largest chemical industrial park in Europe
- Industrial park (5500 workers) and Brightlands Chemelot Campus (3000 workers and 1024 students)
- 8km², 8500 workers
- 1 naphta cracker, 2 ammonia plants
- Polyethylene, polypropylene, EPDM, caprolactam, acrylonitril and fertilizers



Brightlands
Chemelot Campus



Chemelot evolution: Ability to change



Chemelot Industrial Park ●

- 770 ha
- 100+ companies
- 5.500 FTE
- Integrated chemical park with 60 production plants

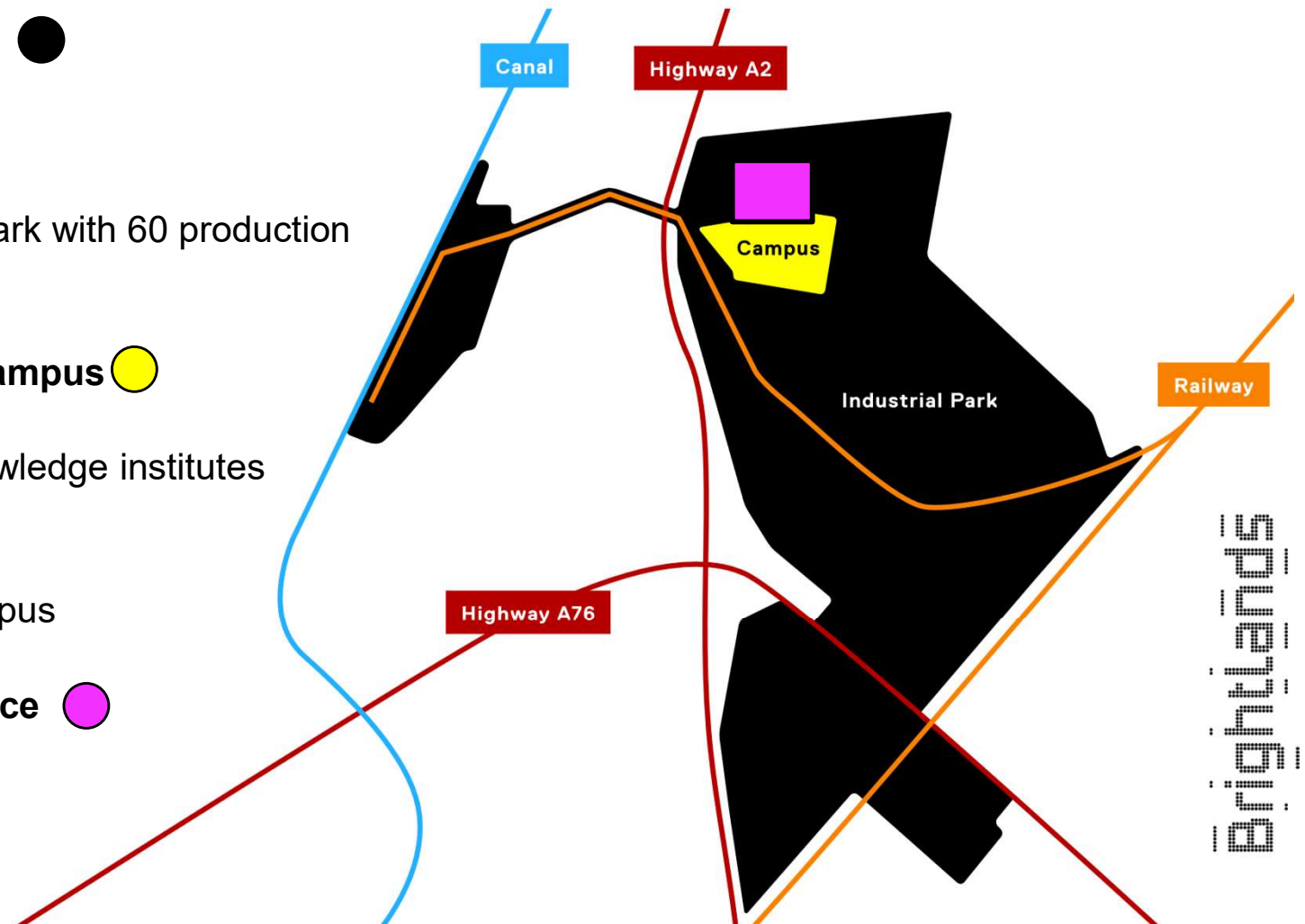
Brightlands Chemelot Campus ●

- 20 ha
- 107 companies & knowledge institutes
- 3.000 FTE
- 1.024 Students
- Open Innovation Campus

Brightlands Circular Space ●

- 10 ha

Brightlands
Chemelot Campus



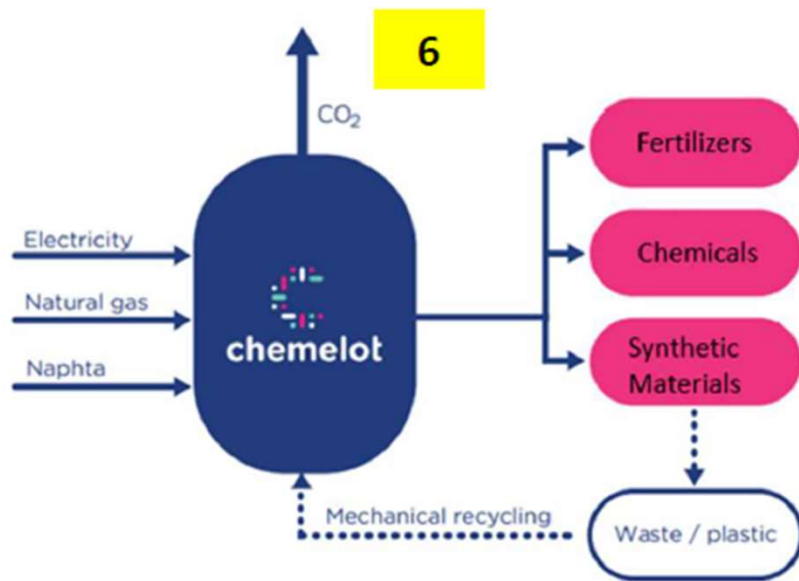
Present at Industrial Park



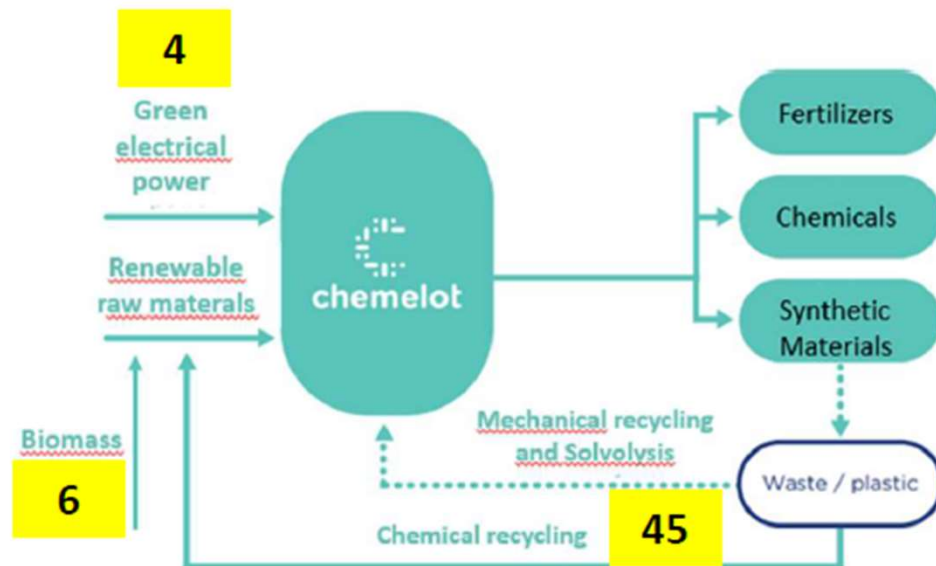
Brightlands
Chemelot Campus

Brightlands
Chemelot Campus

Chemelot 2050: Materials and energy transition



Chemelot 2018



Chemelot 2050

Brightlands Chemelot Campus

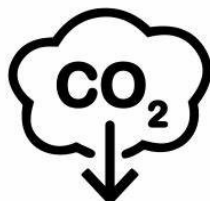
Open innovation around chemistry

Income and jobs for the region

Buildings, plots, facilities, financing, community, education

Strategic cooperation of Province of Limburg, DSM and Maastricht University

Market focus



Circular materials

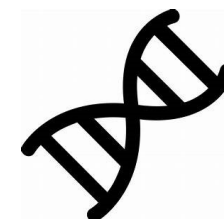
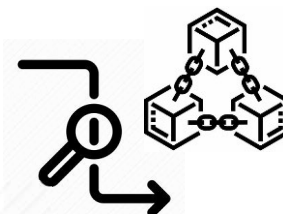
- Plastic recycling
- Design to recycle
- Sustainability driven applications
- Additive manufacturing
- Supply chain tracability/blockchain

Sustainable processes

- Biobased and recycled raw materials
- Electrification/high temperature heat
- Hydrogen
- Carbon Capturing Utilisation
- Increase productivity & efficiency/AI & Big data
- E-waste & battery recycling
- Textile recycling

Biomedical Materials & Devices

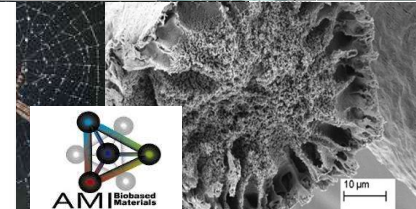
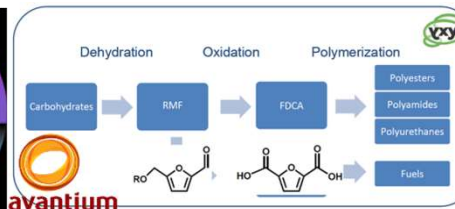
- Cell therapy
- Gen therapy
- Materials
- Devices



Materials Innovation

- Aachen-Maastricht Institute for Biobased Materials (AMIBM)
 - Specialized in fibers
- Brightlands Materials Centre (BMC)
 - A.o. packaging, 3D-printing, thermoplastic composites, construction materials
- Chemelot Innovation & learning labs
 - Plastic converter facilities, lab & pilot & analytics
- New polymer discovery and development
 - Avantium (PEF), Envalior (Stanyl, Arnitel), Avient (Dyneema), Covestro
- New formulations discovery and development
 - Yparex, Niaga (recyclable carpet), Sabic (insulation materials, caps & closures)
- Material development infrastructure
 - Intertek (testing & certification), Sustainable Analytics Group (polymer analysis), Innosyn (synthesis)

CH/LL empowering tomorrow's talent



Process Innovation

- Brightsite Institute
 - upscaling process technology with circular raw materials and carbon-free energy, transition of chemical cluster via system approach
- Non-fossil energy
 - Uniper (H2 from wood waste), Coolbrook (electrified steam cracking)
- Recycling of plastics
 - Ioniqa (chemical recycling of PET), Plastic Energy/Sabir (chemical recycling of polyolefins), QCP (mechanical recycling of polyolefins), Niaga (mechanical recycling of PET), Itero (waste plastic pyrolysis)
- Biobased Materials
 - Vertoro (lignin to BTX), Isobionics (fermentation), Sappi, Avantium (PEF), Syclus (bio-ethylene), Uniper (biobased syngas)
- Process Technology and engineering
 - InnoSyn (synthesis, microreactors), Technoforce (separation), Metgen (enzymes), Sitech (engineering)
- Chemical labs & analytics
 - CHILL

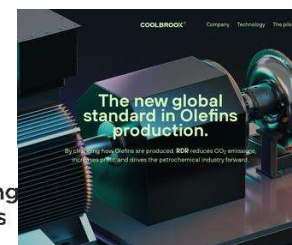


TECHNOFORCE



Technoforce offers Multiple Effect Evaporator (MEE) systems with a stripper, thermo compressor, axial flow pump and sludge dryer. Our objective is to save your operating and disposal costs, and minimize scaling in evaporators.

Technoforce Solutions (I) Private Limited,
D-43-85, Gate 3, MIDC Area Ambad, Nashik-422 003, Maharashtra, India.
Phone No: +91222253 2301/9686/4931022/23503224.
Mail us at info@technoforce.net www.technoforce.net



Sabir wil afvalplastic gaan 'kraken' in Geleen



CH/LL

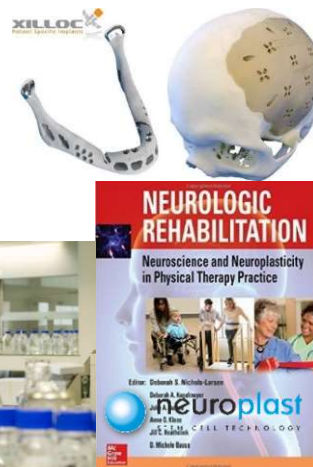
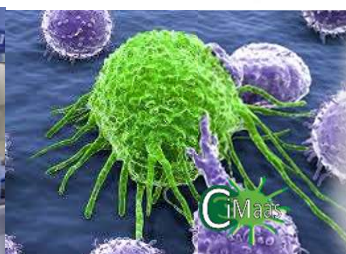
empowering tomorrow's talent



Biomedical innovation

- Upscaling to first-in-man: Medace
- Cell-therapy
 - Lonza (EU center for cell therapy upscaling), Neuroplast (nerve tissue)
- Vaccines and pharmaceuticals:
 - Bisping (cardiology products), Basic Pharma (develop & produce pharmaceuticals in registration phase), Lonza (Covid-19 vaccine)
- Implants and devices
 - Xilloc (3D-printing of medical implants), Triplemed (aneurism repair), Vacis (hemodialytic access), Fortimedix (minimally invasive surgery devices)
- Biolabs
 - CHILL & analytics

Brightlands
Chemelot Campus



Key benefits Brightlands Chemelot Campus

1. A unique environment to scale up
From bench to full-scale, for chemical and medical, with all supporting competences
2. A unique plastic materials ecosystem
Design, synthesis, characterization, certification, application competences on the spot
3. Acces to talent from multiple language communities
French, German, Dutch natively spoken within commuting distance
4. Operation within the fence of a major chemical site
all permits, utilities and infrastructure available
5. We will build for you
No need to invest scarce funds in real estate
We will provide the building competence

Well connected to the whole of Europe

Brightlands
Chemelot Campus



Brightlands Chemelot Campus

brightlands.com

Brightlands
Chemelot Campus

503.674.5010